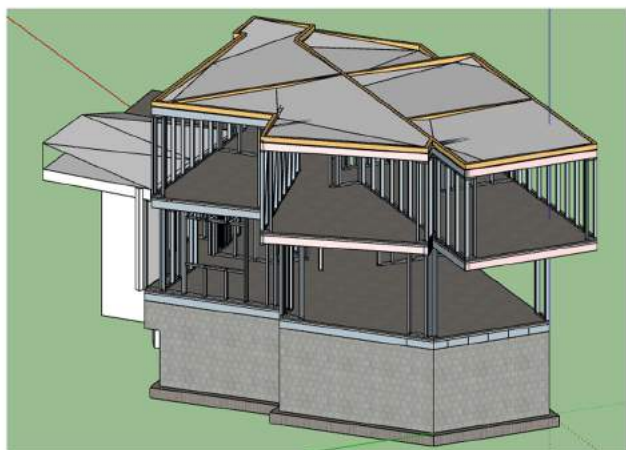
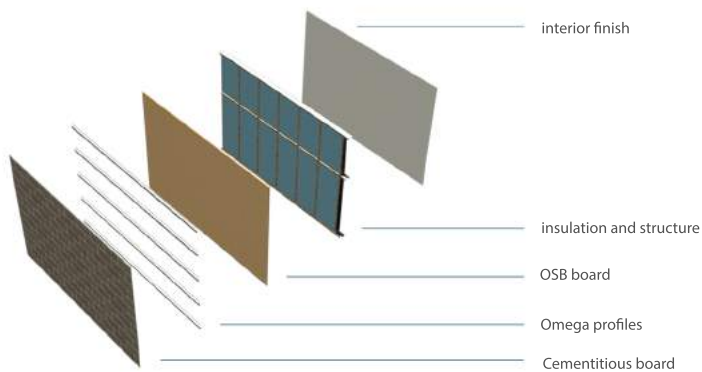


# STEEL FRAME HOUSING EXTENSION **223m<sup>2</sup>**

## 3D STEEL FRAME STRUCTURE



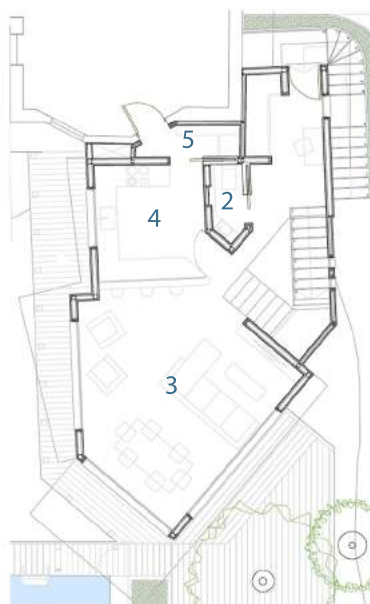
Steel Frame Structure



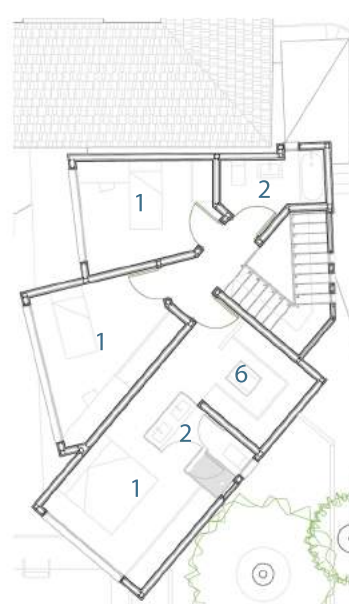
It was a 350m<sup>2</sup> house, extended in 223 m<sup>2</sup> with three floors, bedrooms and bathroom on First Floor, kitchen bathroom and livingroom on Ground Floor and garage, wine cellar and facility room on Basement. It also has 40m<sup>2</sup> exterior deck. We use the Steel Frame Building System finished with cementitious board and flat roof.

## FUNCTIONAL DISTRIBUTION:

- |               |                  |
|---------------|------------------|
| 1. Bedroom    | 4. Kitchen       |
| 2. Bathroom   | 5. Laundry       |
| 3. Livingroom | 6. Dressing room |



Ground Floor



First Floor



Perspective