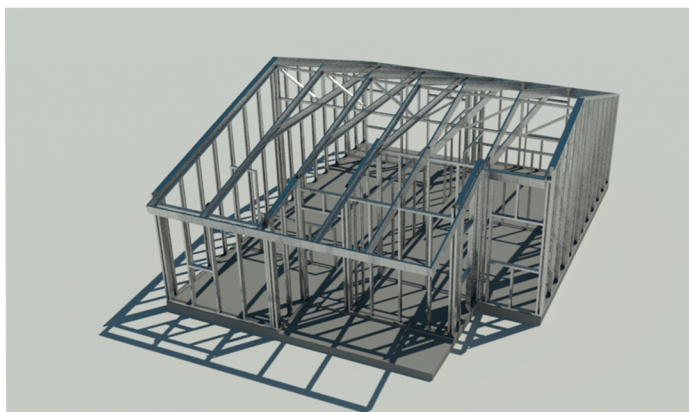


STEEL FRAME HOME PROJECT **62m²**

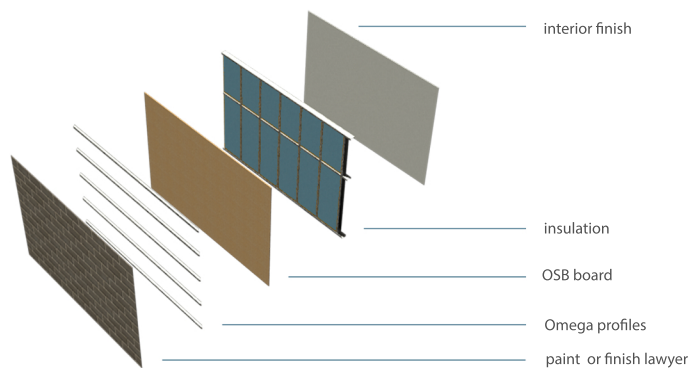
62m² house, with two bedrooms and a large living-dining room and kitchen. The bathroom is separate. It also has a covered porch. We use the Steel Frame Building System finished with calcium silicate panel painted and zinc sheet in roof.

3D RENDER

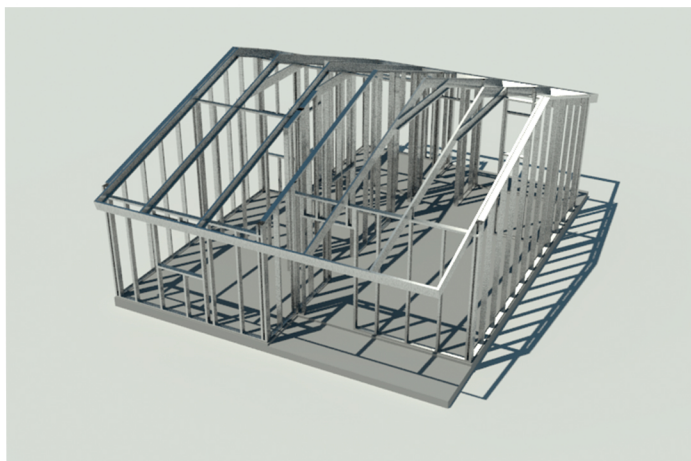


Back view

SYSTEM COMPONENTS:



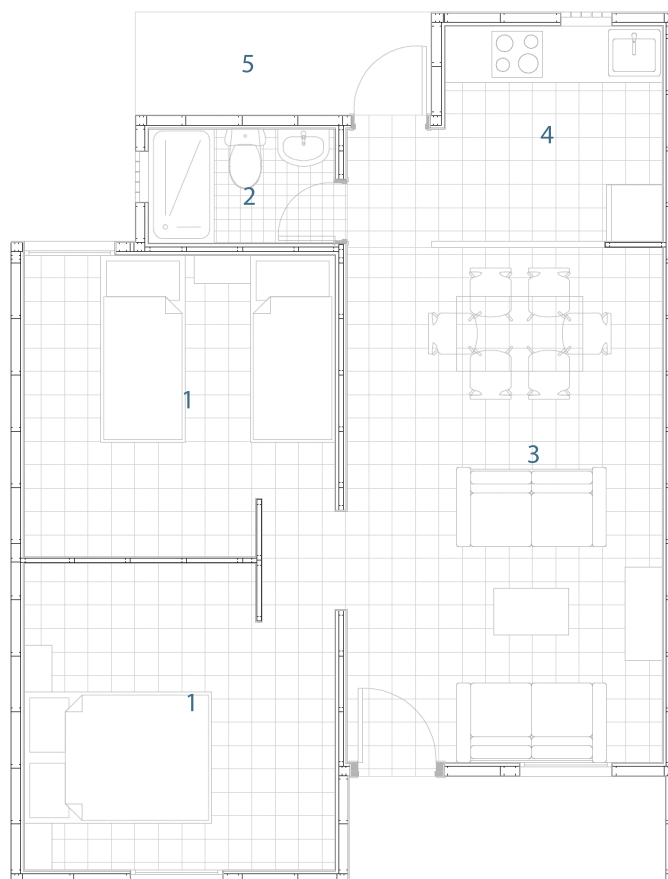
Steel Frame structure



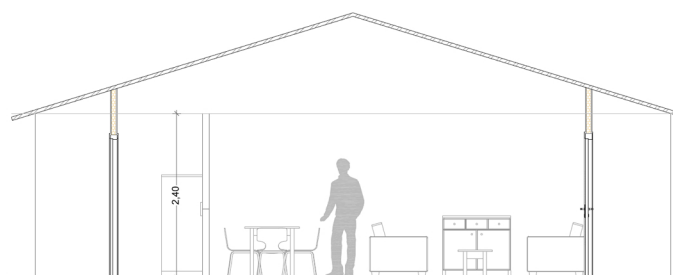
Frontal view

FUNCTIONAL DISTRIBUTION:

- 1. Bedroom
- 2. Bathroom
- 3. Living - dining room
- 4. Kitchen
- 5. Laundry



Ground floor



Longitudinal section