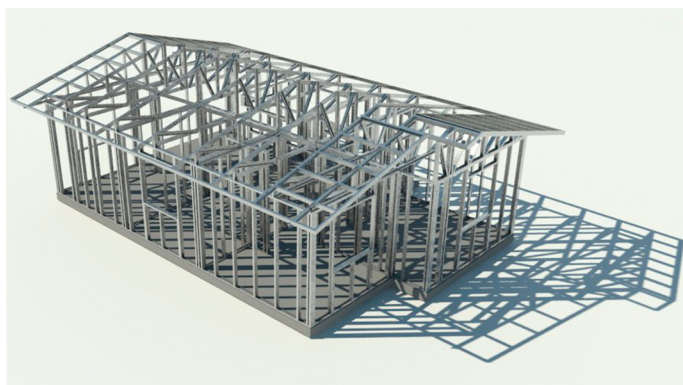


# STEEL FRAME HOME PROJECT **56m<sup>2</sup>**

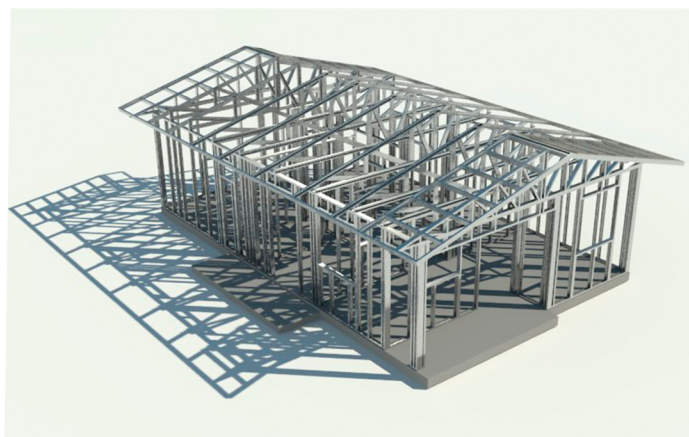
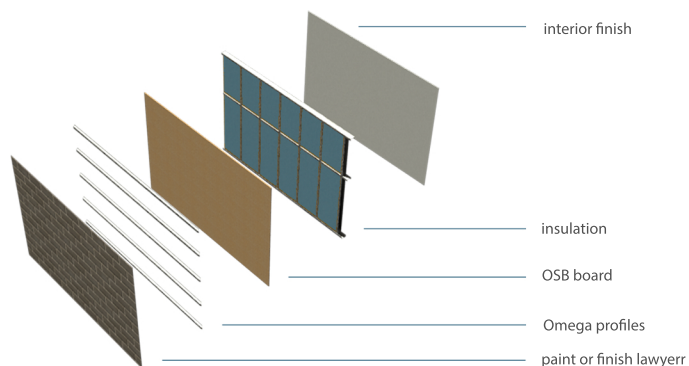
56m<sup>2</sup> house, with two bedrooms and a large living-dining room and kitchen. The bathroom is separate. It also has a covered porch. We use the Steel Frame Building System finished with calcium silicate panel painted and asphalt shingle in roof.

## 3D RENDER



Frontal view

## SYSTEM COMPONENTS:



Steel Frame structure

## FUNCTIONAL DISTRIBUTION:

- 1. Bedroom
- 2. Bathroom
- 3. Living- dining room
- 4. Kitchen
- 5. Laundry

