

STEEL FRAME HOME PROJECT **50m²**

50m² house, with two bedrooms and a large living-dining room and kitchen. The bathroom is separate. It also has a covered porch. We use the Steel Frame Building System finished with calcium silicate panel painted and asphalt shingle in roof.

3D RENDER



Frontal view



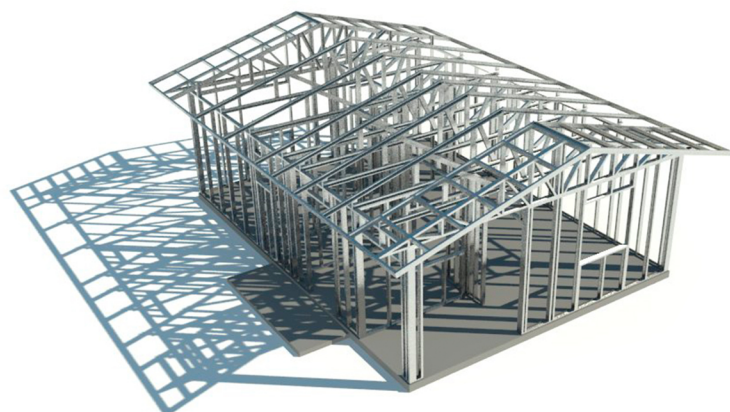
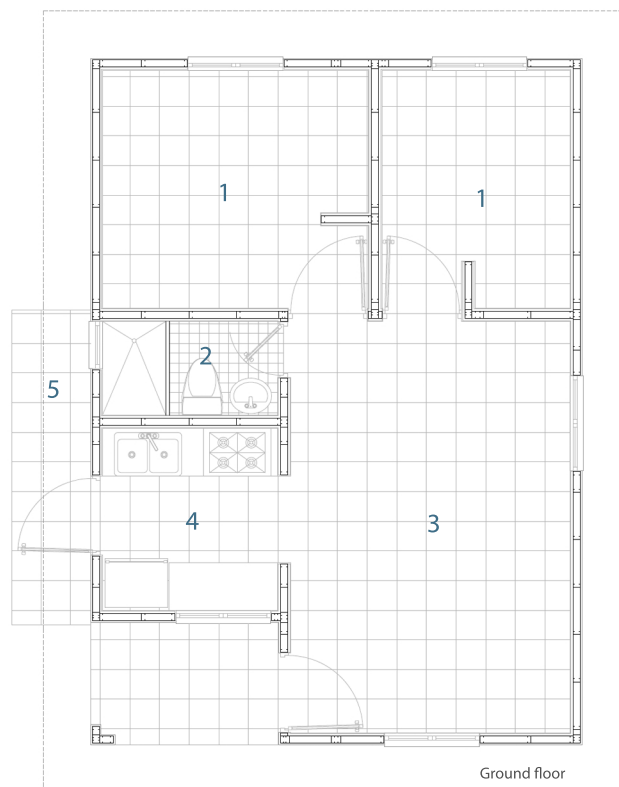
Frontal view



Interior view

FUNCTIONAL DISTRIBUTION:

- 1. Bedroom
- 2. Bathroom
- 3. Living-dining room
- 4. Kitchen
- 5. Laundry



Steel Frame structure

SYSTEM COMPONENTS:

