

STEEL FRAME PROJECT LOS NOGALES 140m²

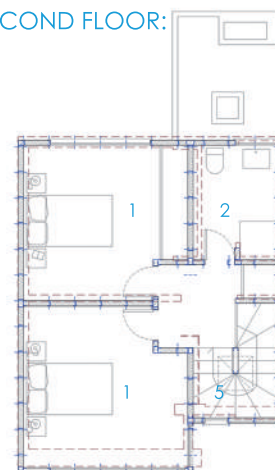
140 m² house, (ground floor 50 m² built, first floor 45 m² built and second floor of 45 m²), Steel Frame construction system, with structure of cold formed lightened galvanized profiles.

HOUSE TYPE 1

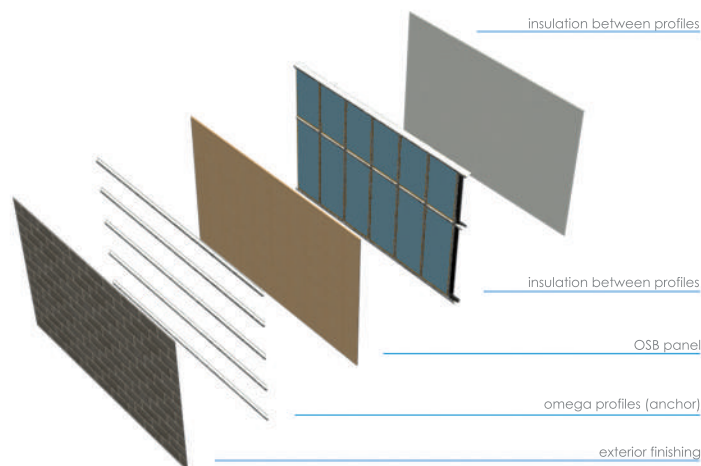


FUNCTIONAL DISTRIBUTION SECOND FLOOR:

1. Bedroom
2. Shared bathroom
5. Stairs

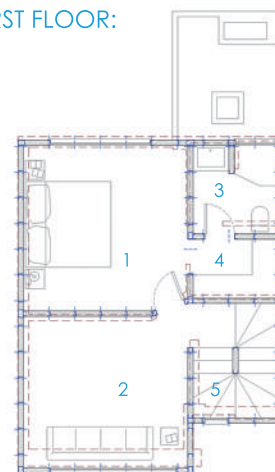


SYSTEM COMPONENTS:



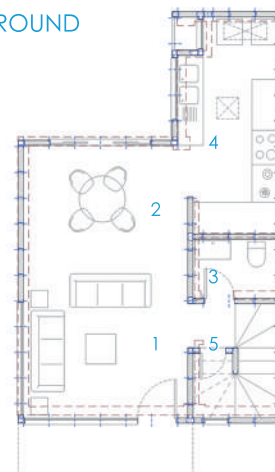
FUNCTIONAL DISTRIBUTION FIRST FLOOR:

1. Master bedroom
2. Living room
3. Master bedroom
4. Master closet
5. Stairs



FUNCTIONAL DISTRIBUTION GROUND FLOOR:

1. Living room
2. Dining room
3. Toilet
4. Kitchen
5. Stairs



URBANISTIC SYSTEM

STEEL FRAME PROJECT LOS NOGALES 140m²

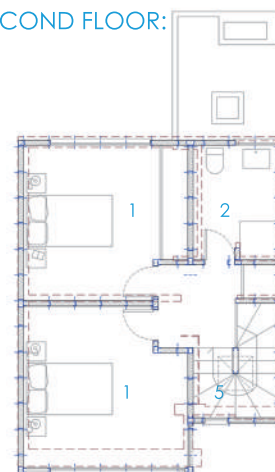
140 m² house, (ground floor 50 m² built, first floor 45 m² built and second floor of 45 m²), Steel Frame construction system, with structure of cold formed lightened galvanized profiles.

HOUSE TYPE 2

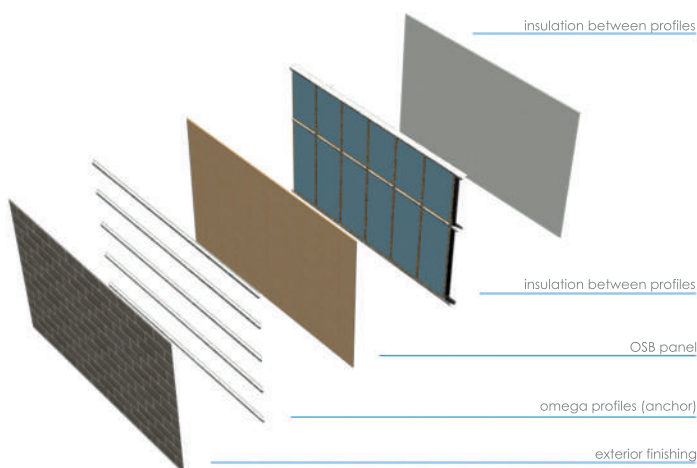


FUNCTIONAL DISTRIBUTION SECOND FLOOR:

1. Bedroom
2. Shared bathroom
5. Stairs

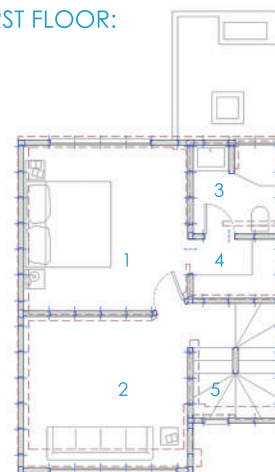


SYSTEM COMPONENTS:



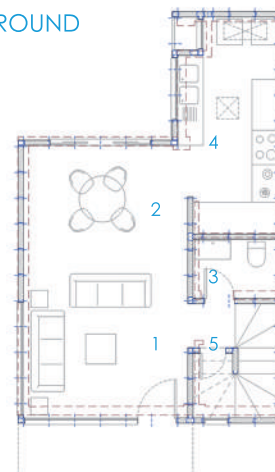
FUNCTIONAL DISTRIBUTION FIRST FLOOR:

1. Master bedroom
2. Living room
3. Master bedroom
4. Master closet
5. Stairs



FUNCTIONAL DISTRIBUTION GROUND FLOOR:

1. Living room
2. Dining room
3. Toilet
4. Kitchen
5. Stairs



URBANISTIC SYSTEM

STEEL FRAME PROJECT LOS NOGALES

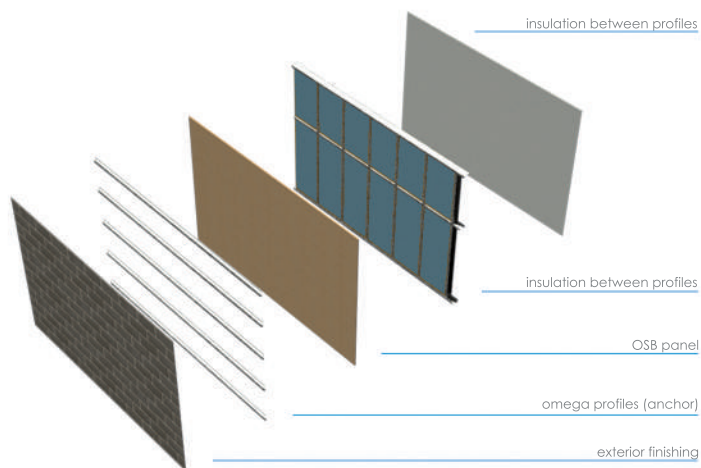
140m²

140 m² house, (ground floor 50 m² built, first floor 45 m² built and second floor of 45 m²), Steel Frame construction system, with structure of cold formed lightened galvanized profiles.

HOUSE TYPE 3



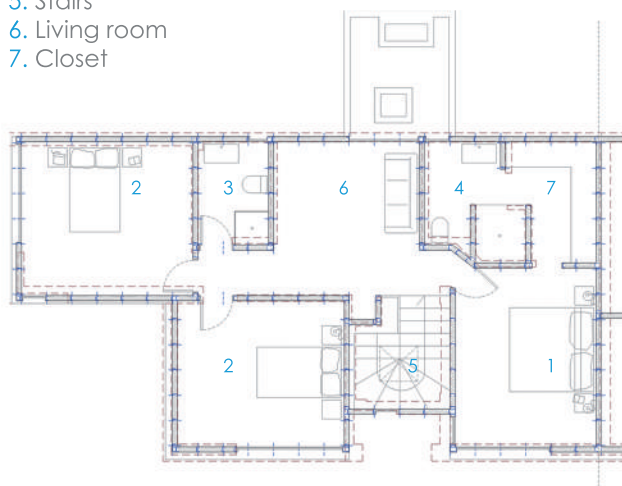
SYSTEM COMPONENTS:



URBANISTIC SYSTEM

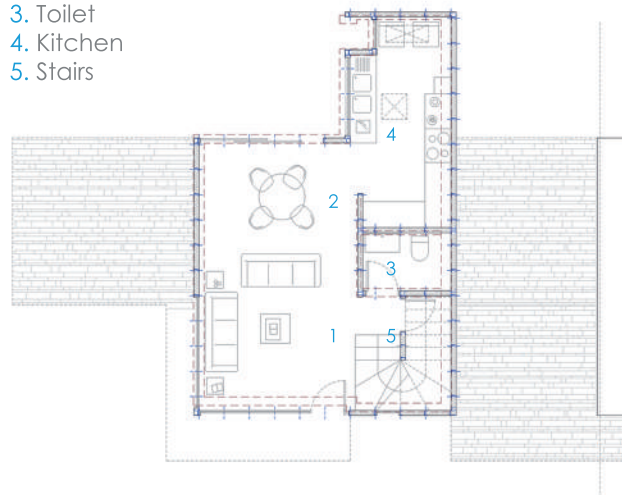
DISTRIBUCIÓN FUNCIONAL PLANTA ALTA:

1. Master bedroom
2. Bedroom
3. Shared bathroom
4. Master bathroom
5. Stairs
6. Living room
7. Closet



FUNCTIONAL DISTRIBUTION GROUND FLOOR:

1. Living room
2. Dining room
3. Toilet
4. Kitchen
5. Stairs



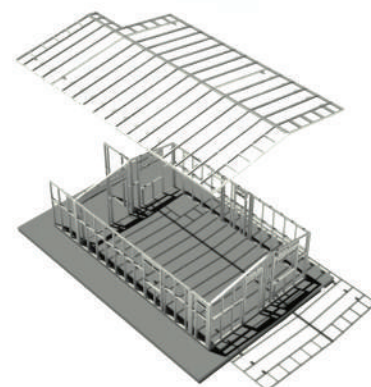
COMPONENT DESCRIPTION

SYSTEM GENERAL FEATURES

Steel frame is a constructive system whose main feature is a structure which consists in cold-formed profiles of galvanized steel. This system is basically formed by upright-profiles in C form (installed in vertical position separated 40-60 centimeters). On the borders, the profiles are screwed down to the track profiles (U form). These U form-profiles form the inferior and superior border of the whole grid.

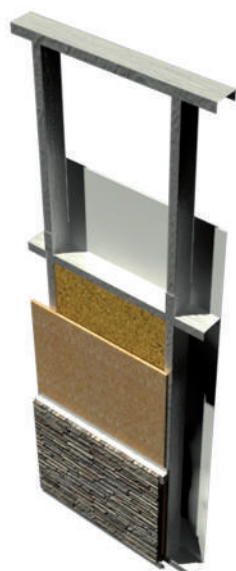
The profiles are used to form structural and non-structural panels, secondary beams, ground beams, rafters and other components. These profile grids are later covered by different layers of panels. That is why we can talk about a Dry Construction system.

The profiles present reduced thickness and have drillings to let the electric and plumbing installation system go through them.



CONSTRUCTIVE SOLUTION

SYSTEM ADVANTAGES



FACADE - OSB panel

Main advantages:

- Faster (almost 80% faster than traditional systems)
- lower construction costs (around 40% cheaper)
- Easier to handle

We can also emphasize and group the system advantages into 3 types:

1. ADVANTAGES OF THE CONSTRUCTIVE SYSTEM ITSELF:

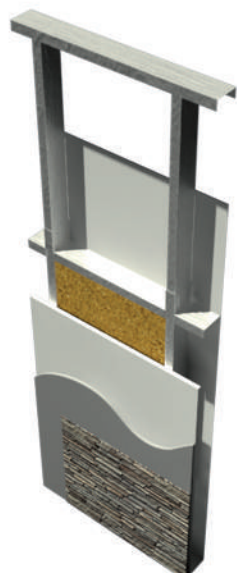
- Earthquake-proof system
- Fire proof system
- Light system
- Recyclable and environmental system
- Modular and panel based system
- adequacy and benefits not only in big but also in small projects
- Durability (profile sheet galvanization)
- Easy transport everywhere
- Investment in plants or models not needed
- Flexible to all kinds of design

2. ON SITE ADVANTAGES:

- More cost-effective
- Faster
- Easier (easier assembly)
- Better thermic and acoustic insulation
- Dry system
- Cleaner construction site
- The system does not need high qualified workers
- Increases the usable floor area regarding to traditional systems
- Avoids overrun and setting-out on site
- Eliminates heavy machinery and reduces auxiliar construction elements
- Reduces the number of trades on site
- Simplification of the electrical and plumbing installations

3. ADVANTAGES POST - WORK:

- Flexibility and simplicity in building extensions and renovations
- Easier, cleaner, faster and cheaper maintenance and repair works



FACADE - Calcium silicate panels